

Image: Jeremy Bishop / Unsplash

IT'S A RELATIONSHIP PROBLEM!

*ADDRESSING BIODIVERSITY LOSS, CLIMATE
CHANGE, INEQUALITY, AND GLOBAL PANDEMICS*

*Prof. Karen O'Brien
Department of Sociology and Human Geography
University of Oslo
karen.obrien@sosgeo.uio.no*

'Unprecedented': the US west's wildfire catastrophe explained

**The climate crisis and fire suppression underlie the disaster.
Addressing it means altering society's relationship to the land**



▲ The Bobcat Fire makes a run up a mountainside in the Angeles national forest on Thursday. Photograph: David McNew/Getty Images

The historic wildfires that have seized the west are delivering a dire message: the climate crisis and decades of bad environmental policies have unleashed deadly consequences.

Wealth gap widening for more than 70% of global population, researchers find

Policymakers urged to act on climate and bridge digital divide as study shows soaring inequality is affecting millions



▲ A protest against social inequality in Santiago. A rise in subway fares in the Chilean capital sparked months of civil unrest. Photograph: Spencer Platt/Getty Images

Inequality has reached unprecedented levels, with more than 70% of the global population living in countries where the wealth gap is growing, according to a new UN report.

Rampant destruction of forests 'will unleash more pandemics'

Researchers to tell UN that loss of biodiversity enables rapid spread of new diseases from animals to humans

- [Coronavirus - latest updates](#)
- [See all our coronavirus coverage](#)



▲ HIV spread from chimpanzees and gorillas that were slaughtered for bushmeat in west Africa. Photograph: agefotostock/Alamy

Scientists are to warn world leaders that increasing numbers of deadly new pandemics will afflict the planet if levels of deforestation and biodiversity loss continue at their current catastrophic rates.

World fails to meet a single target to stop destruction of nature - UN report

'Humanity at a crossroads' after a decade in which all of the 2010 Aichi goals to protect wildlife and ecosystems have been missed



▲ Coral on the Great Barrier Reef, which has suffered its most widespread coral bleaching on record. Photograph: James Cook University/AFP via Getty Images

The world has failed to meet a single target to stem the destruction of wildlife and life-sustaining ecosystems in the last decade, according to a devastating new report from the UN on the state of nature.

From tackling pollution to protecting coral reefs, the international community did not fully achieve any of the 20 Aichi biodiversity targets agreed in Japan in 2010 to slow the loss of the natural world. It is the second consecutive decade that governments have failed to meet targets.

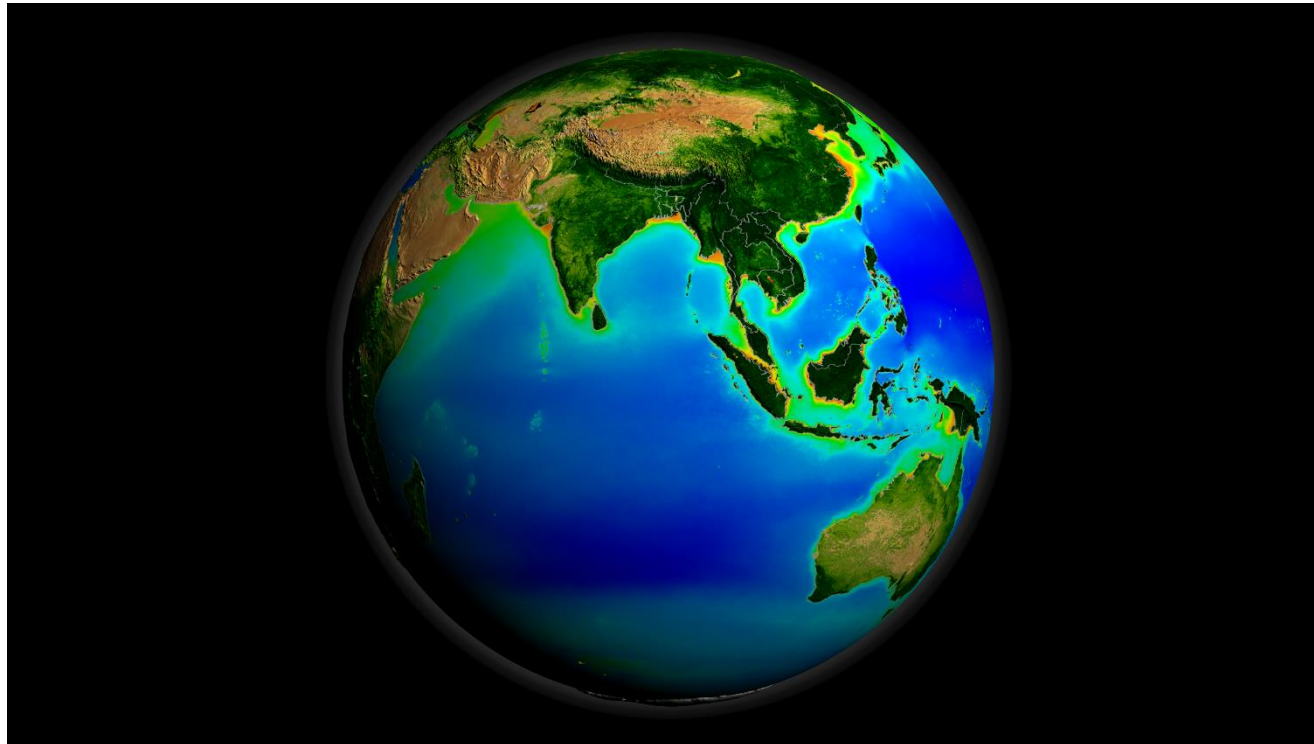


Photo: Clair Fraser Photography / Shutterstock



Photo: Stefan Cosma / Unsplash

System: 1) “a regularly interacting or interdependent group of items forming a unified whole.” 2) “an organized set of doctrines, ideas, or principles usually intended to explain the arrangement or working of a systematic whole.”*

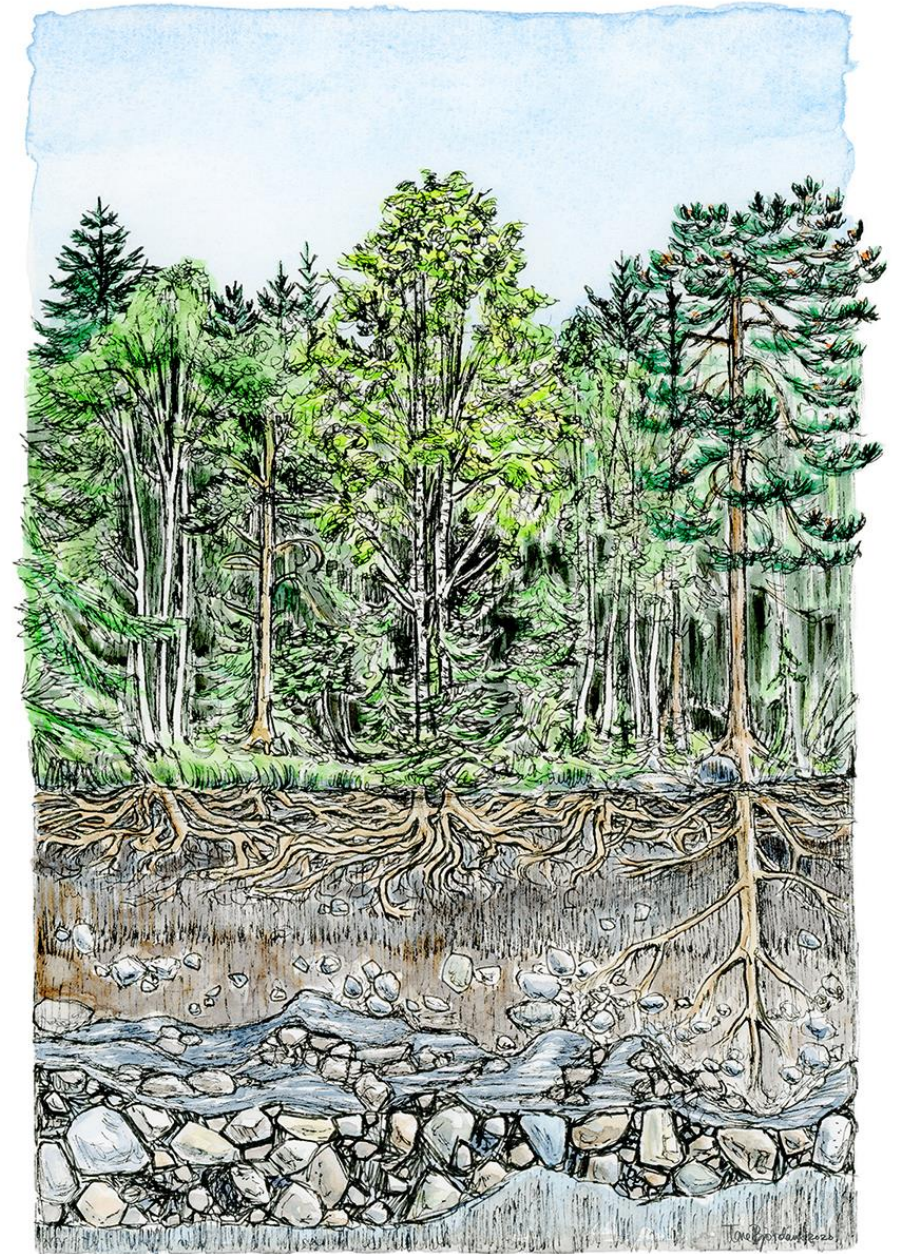
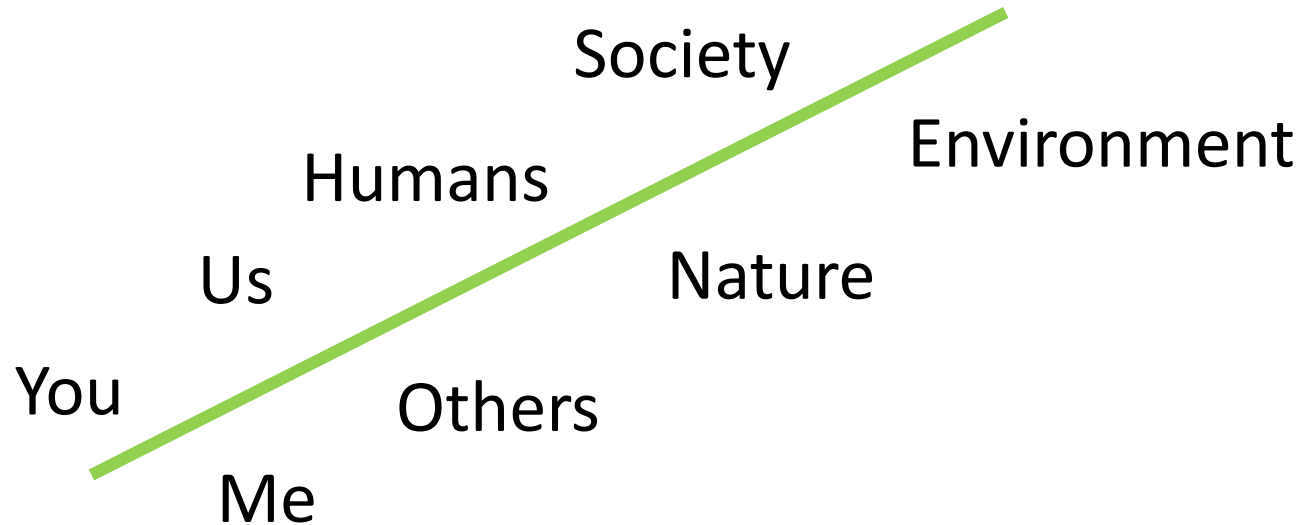


Source:). NASA/Goddard Space Flight Center, The SeaWiFS Project and GeoEye, Scientific Visualization Studio.

**Merriam-Webster Online Dictionary*

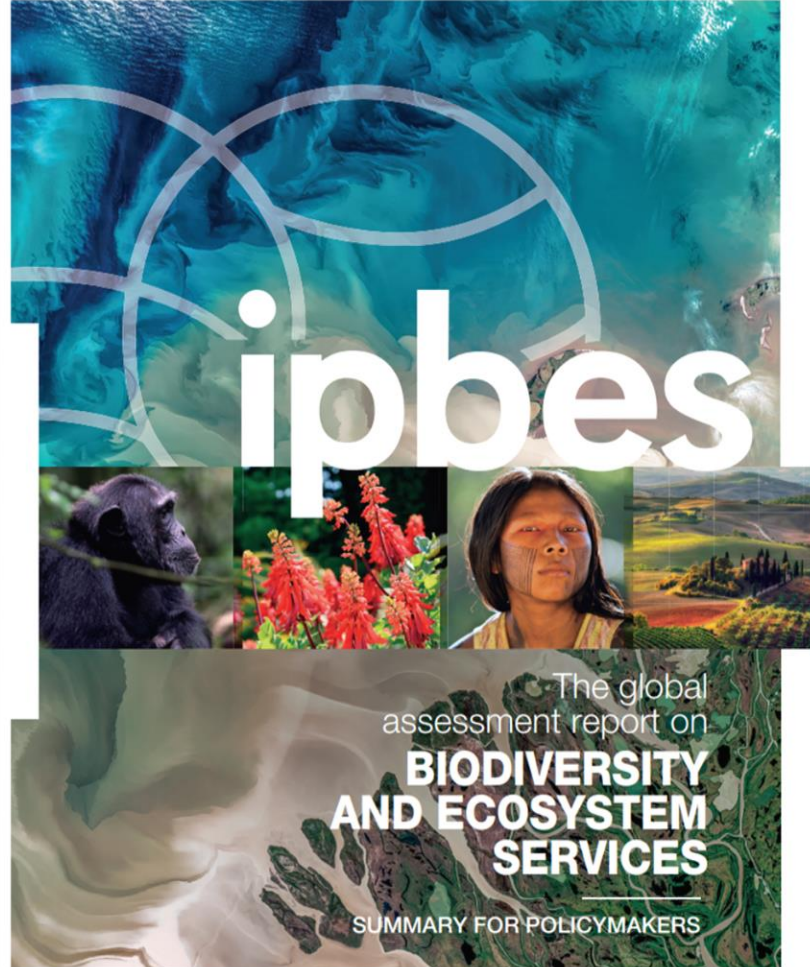
RELATIONSHIPS

- “the way in which two or more people or things are connected, or the state of being connected.”



Artwork by Tone Bjordam





C. Goals for conserving and sustainably using nature and achieving sustainability cannot be met by current trajectories, and goals for 2030 and beyond may only be achieved through transformative changes¹⁴ across economic, social, political and technological factors.

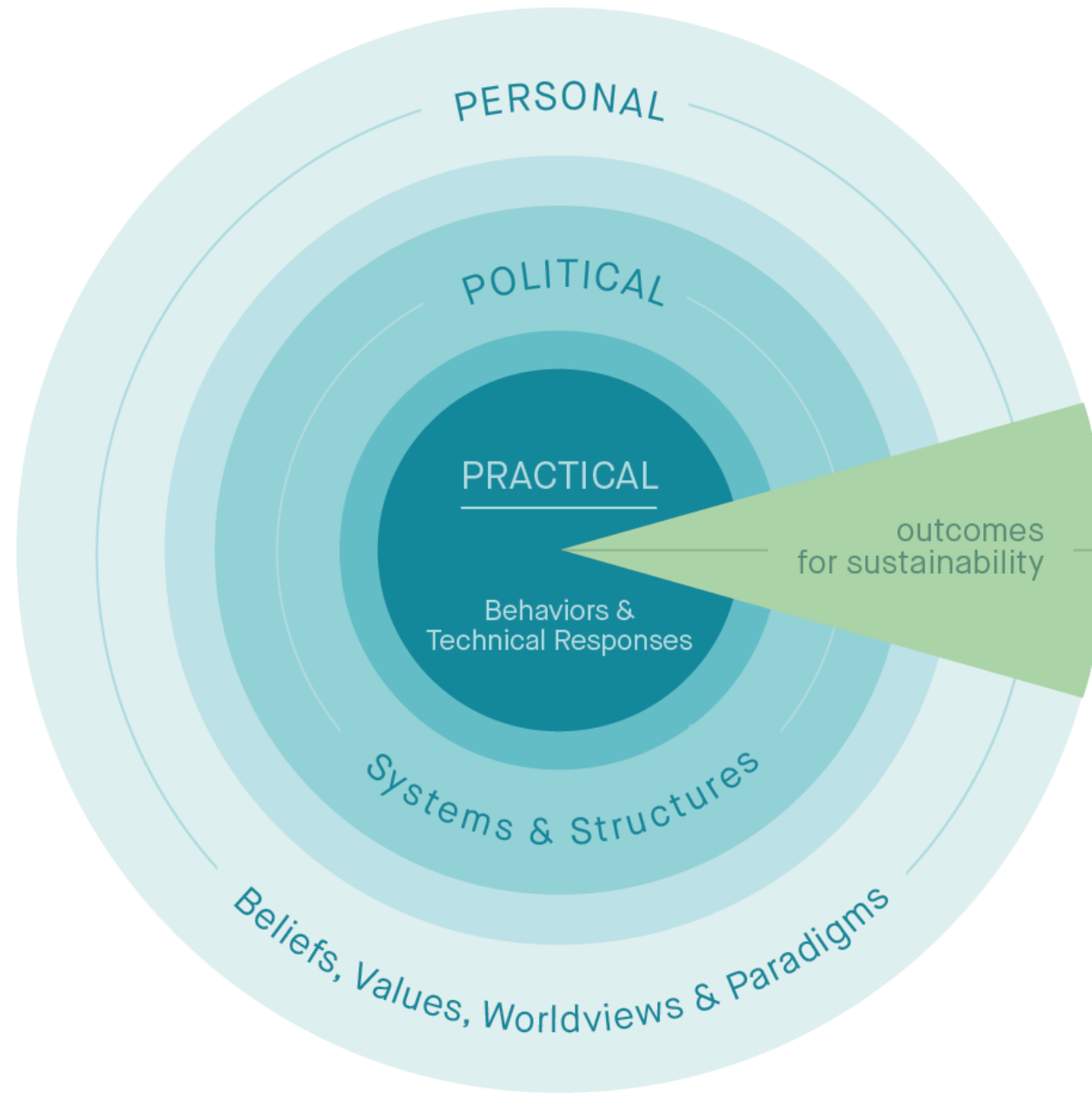
D. Nature can be conserved, restored and used sustainably while simultaneously meeting other global societal goals through urgent and concerted efforts fostering transformative change.



TRANSFORMATION: Significant physical and/or qualitative changes in form, structure, or meaning-making.

TRANSFORMATION: “The powerful unleashing of human potential to commit, care, and affect change for a better life.” (Sharma 2007)

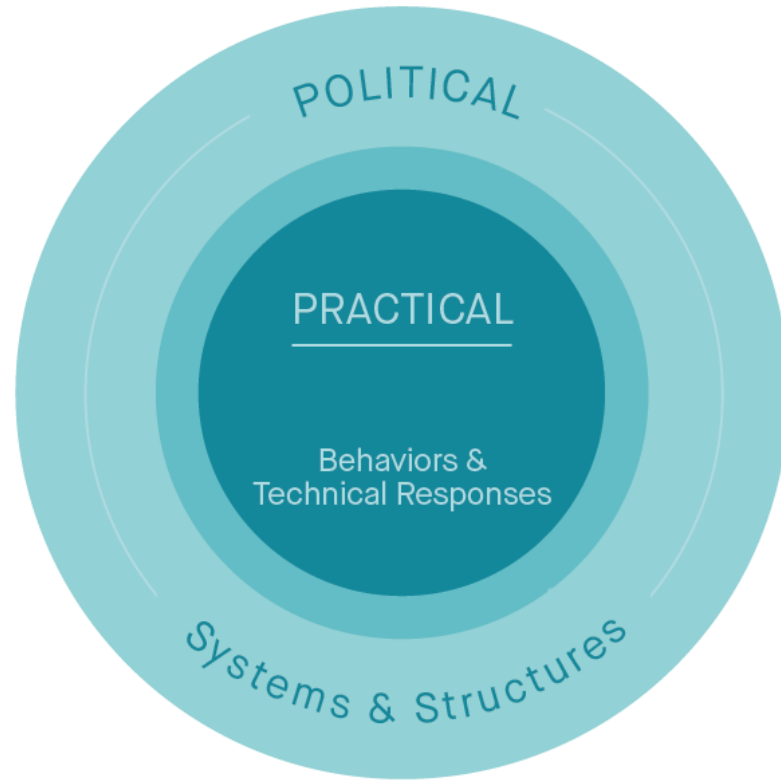


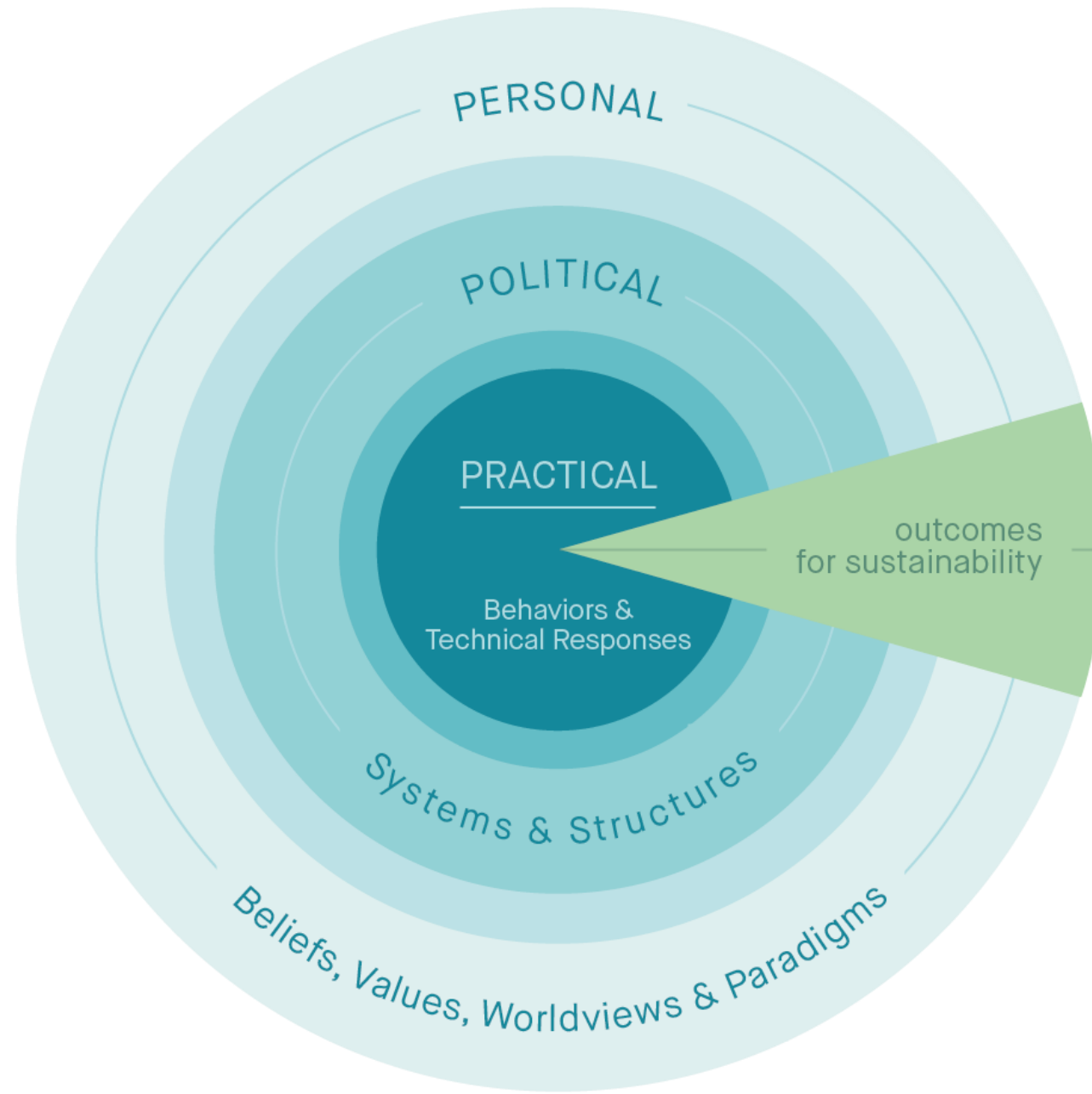


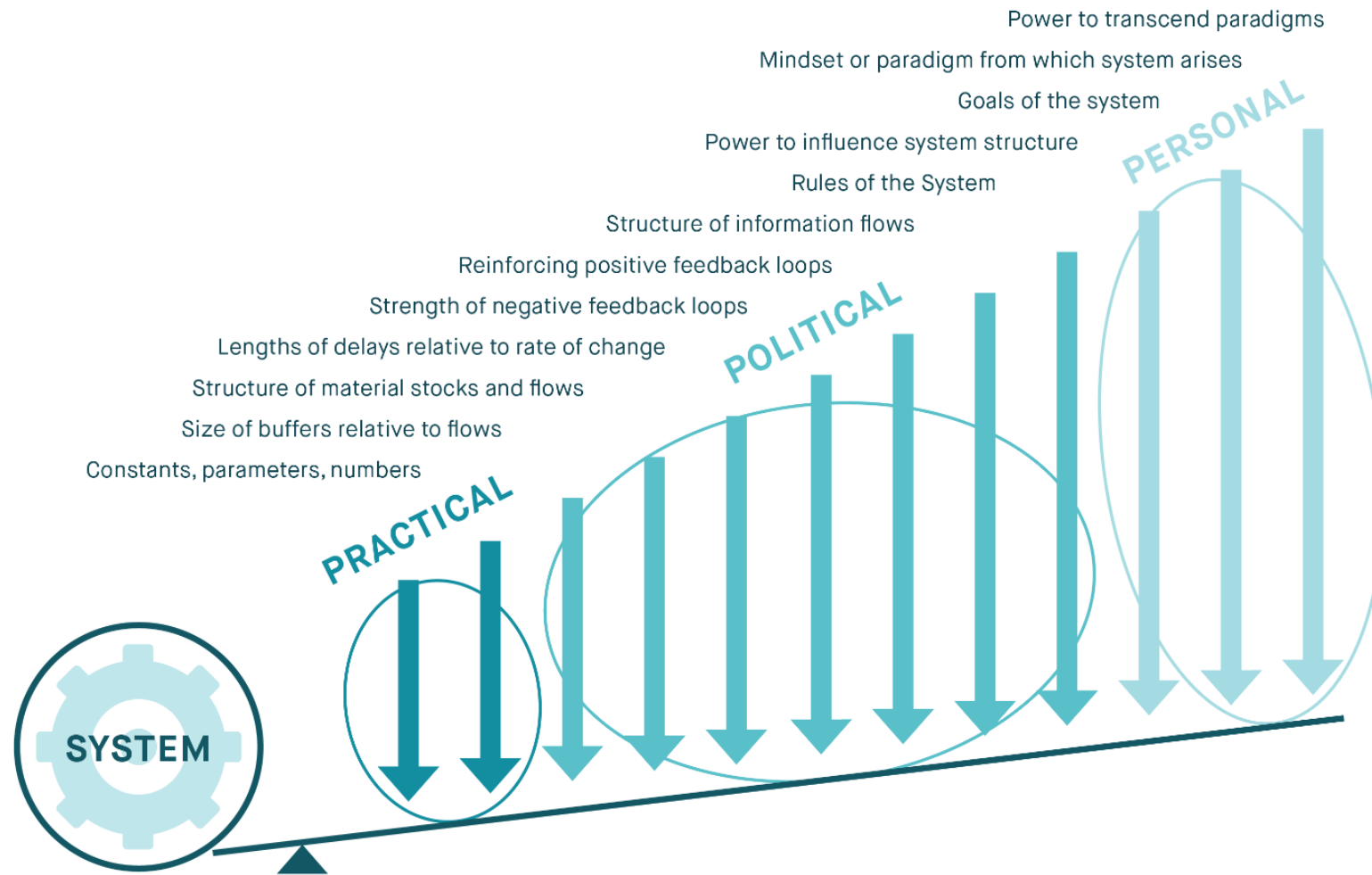


PRACTICAL

Behaviors &
Technical Responses







Based on: Meadows, D. H. 1999. "Leverage Points: Places to Intervene in a System." The Sustainability Institute.

“Paradigms are the sources of systems. From them, from shared social agreements about the nature of reality, come system goals and information flows, feedbacks, stocks, flows and everything else about systems.”

(Meadows 1999)

PARADIGMS



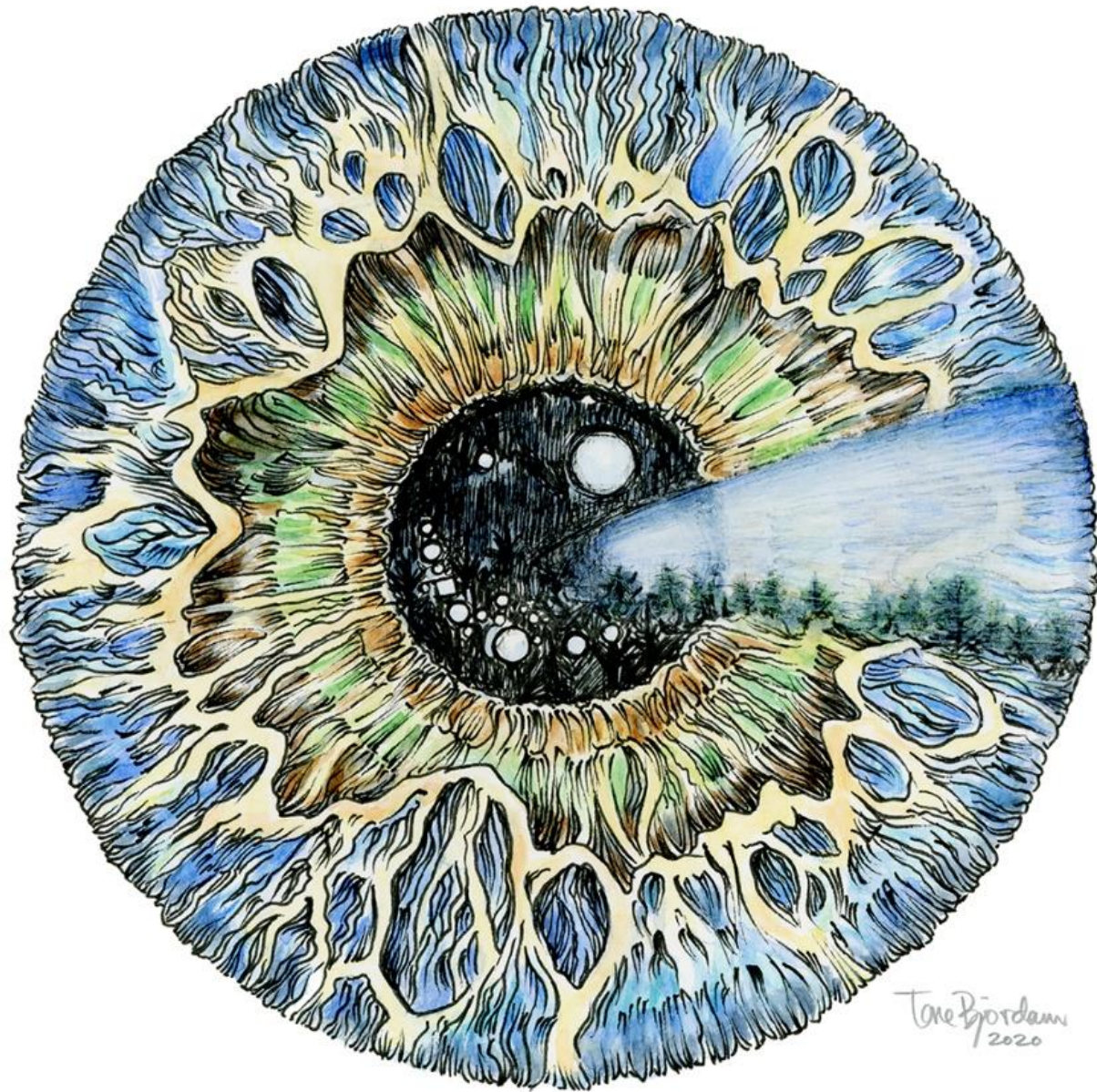
mechanistic
atomistic
deterministic
reductionist
materialist
matter is dead

ENLIGHTENMENT



lived experience
embodied meaning
subjectivity
consciousness
inter-being
spirituality
matter is alive

ENLIVENMENT



Tone Björkum
2020



Photo: Ashish Kothari, participant in the ACKnowl-EJ project.

“...were social scientists to embrace the quantum worldview, ‘then instead of seeing human beings as separate elements in causal interaction, we ought to see them too as correlated projections of a common ground.’”

(Wendt 2015: 173, citing Pylkkänen 2007: 145)



ENTANGLEMENT



Photo: lovelyday12 / Shutterstock

POTENTIALITY

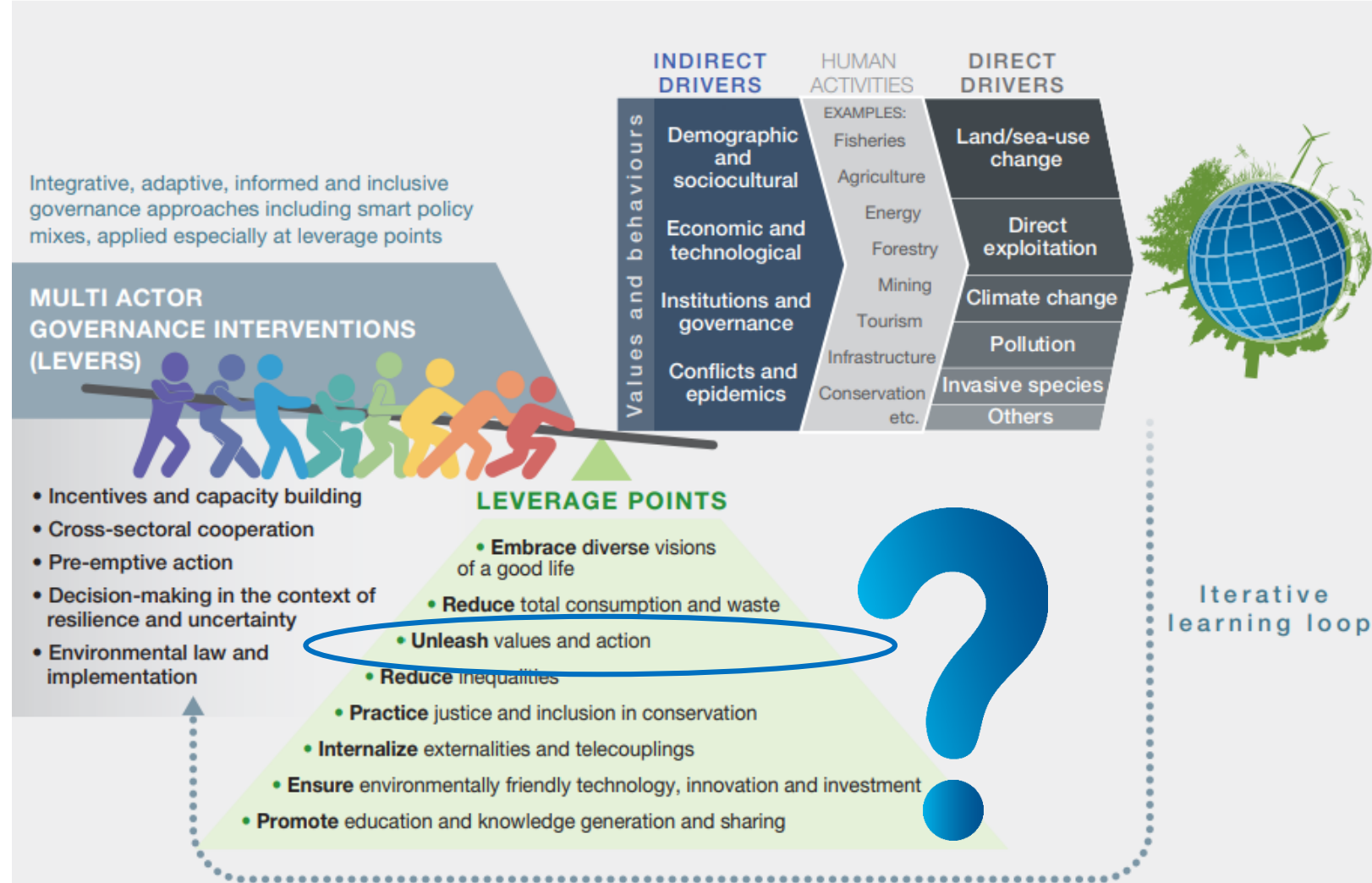
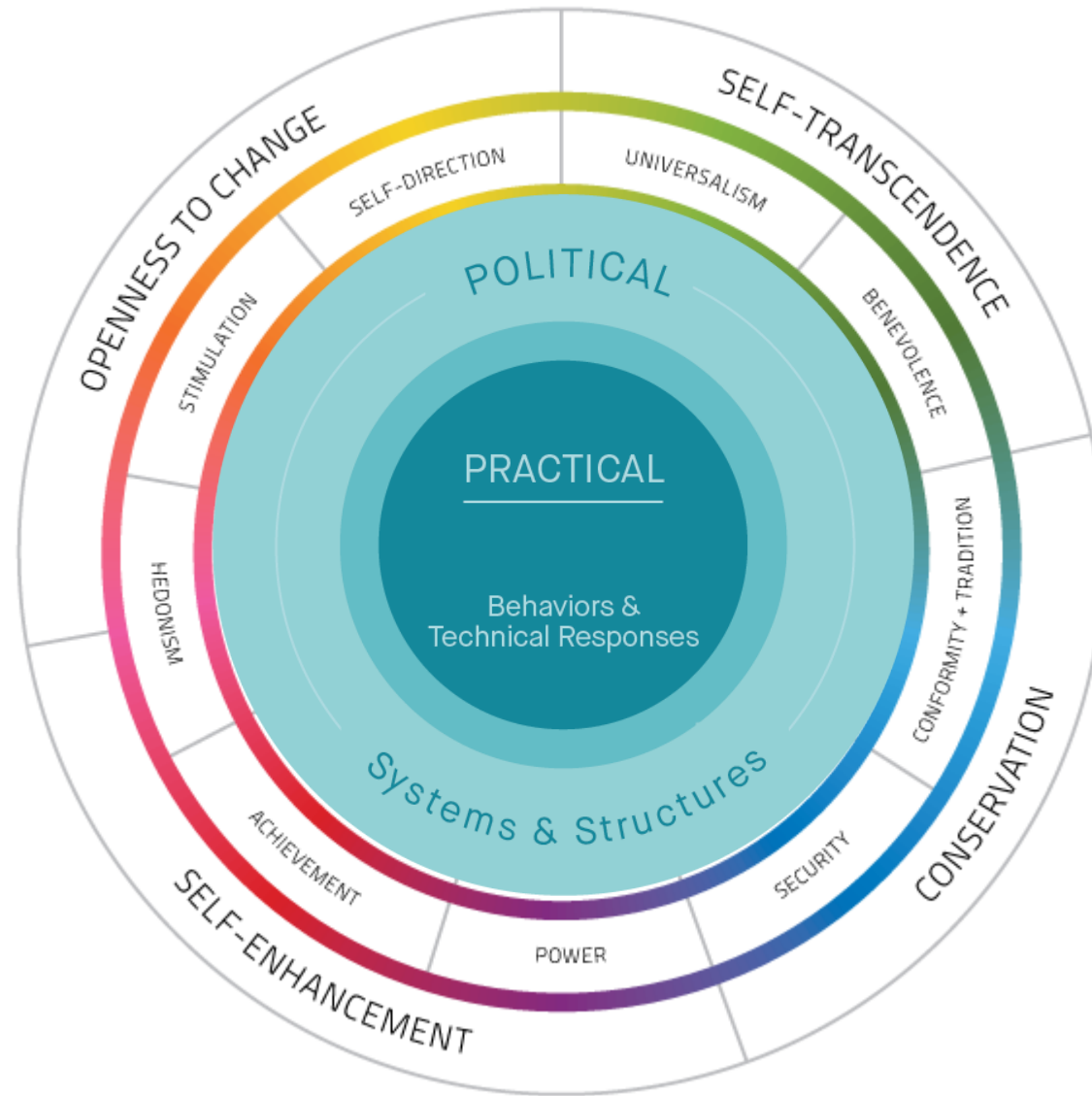


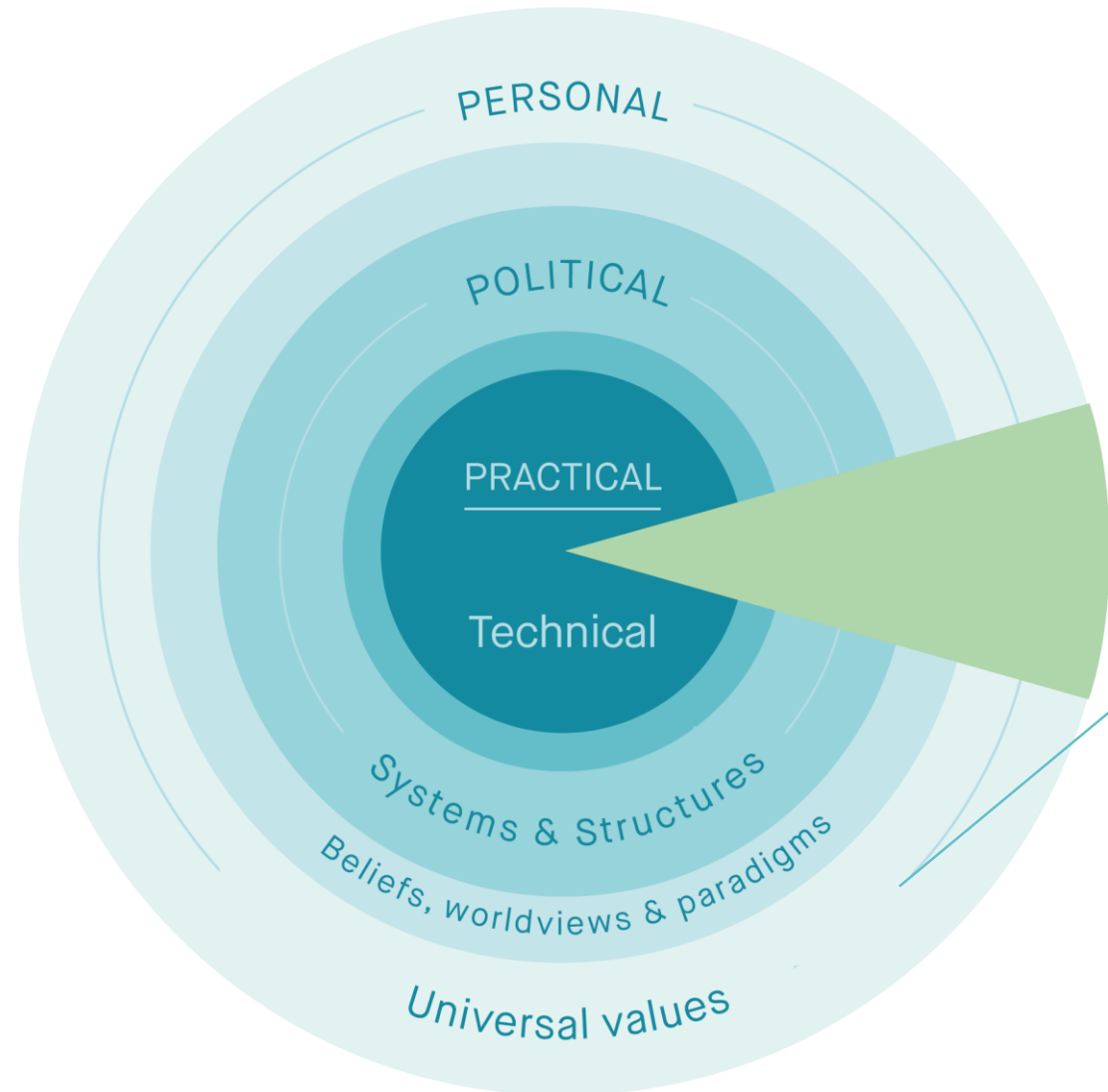
Figure SPM 9 **Transformative change in global sustainability pathways.**

Collaborative implementation of priority governance interventions (levers) targeting key points of intervention (leverage points) could enable transformative change from current trends towards more sustainable ones. Most levers can be applied at multiple leverage points by a range of actors, such as intergovernmental organizations, governments, non-governmental organizations, citizen and community groups, indigenous peoples and local communities, donor agencies, science and educational organizations, and the private sector, depending on the context. Implementing existing and new instruments through place-based governance interventions that are integrative, informed, inclusive and adaptive, using strategic policy mixes and learning from feedback, could enable global transformation.



VALUES

FULL RESPONSES

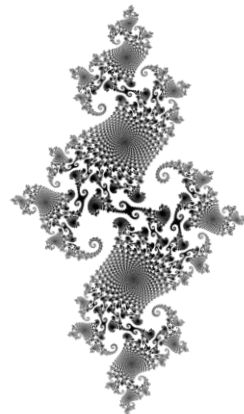
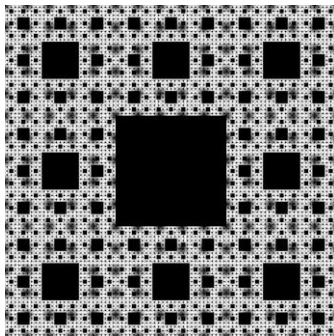
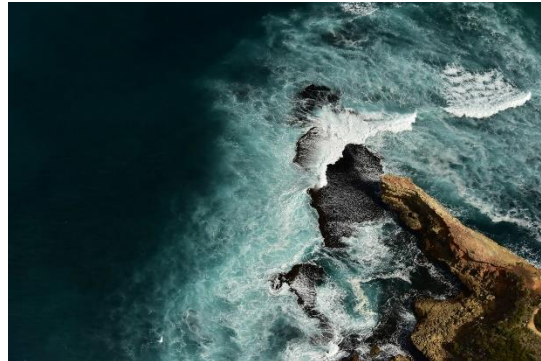


INTEGRITY, ONENESS, DIGNITY,
COMPASSION, EQUITY, INCLUSION,
JUSTICE, ...



*How can we develop
our full potential to
generate transformative
change?*

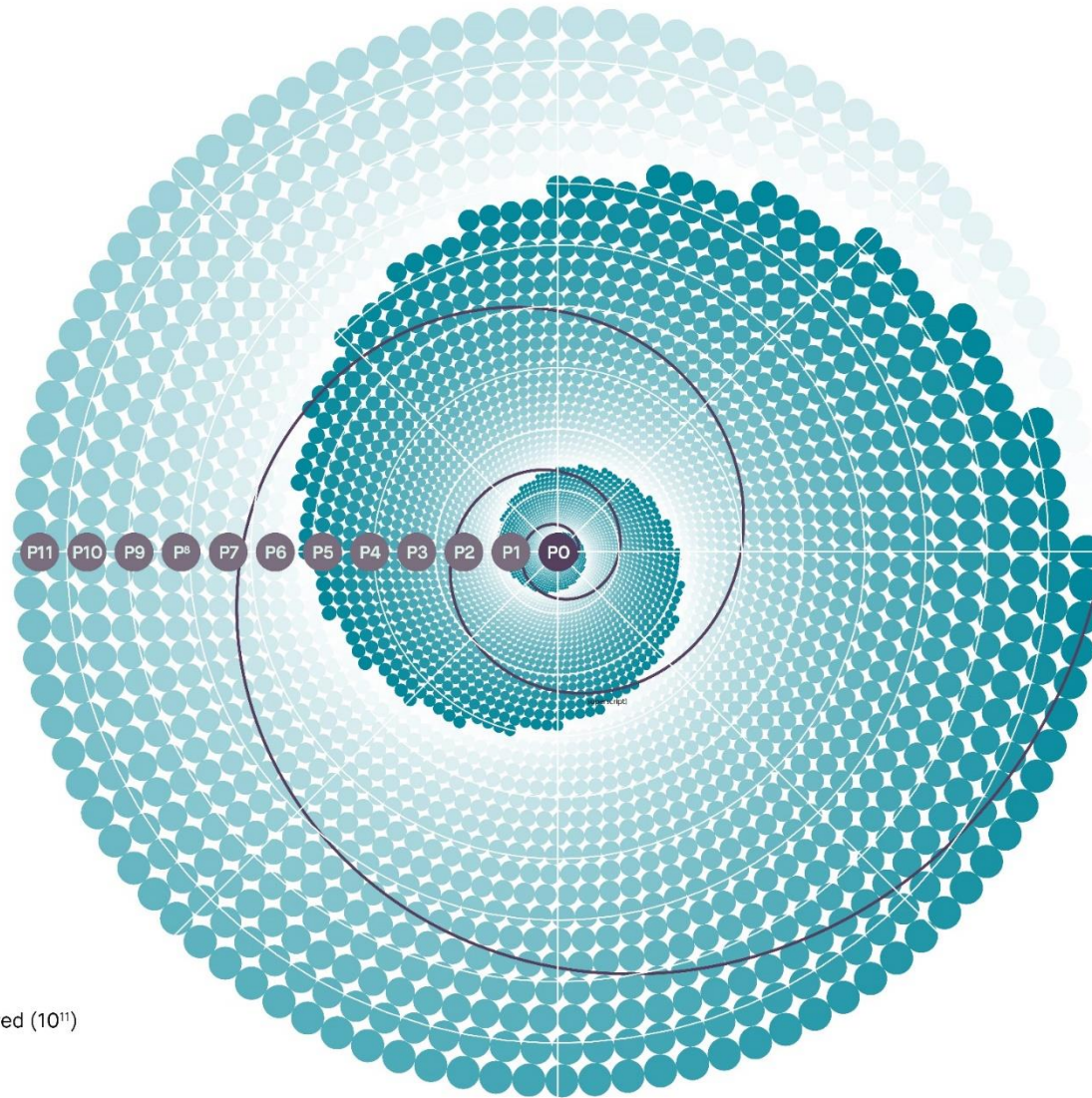
FRACTALS



Fractals are self-similar patterns that repeat themselves across scales.

In terms of transformations, they refer to actions where «Each idea, initiative, or endeavor ... has the same characteristics as the whole»

- P0** Individual (YOU!) (10^0)
- P1** Family/Friends (10^1)
- P2** Personal Network (10^2)
- P3** Community (10^3)
- P4** Village/Neighborhood (10^4)
- P5** Metacommunity (10^5)
- P6** Urban (10^6)
- P7** Nation/State (10^7)
- P8** Sub-continental/Regional (10^8)
- P9** Continental (10^9)
- P10** Global (10^{10})
- P11** All *homo sapiens* who have ever lived (10^{11})



(Source: O'Brien 2020, You Matter More Than You Think: Quantum Social Change in Response to a World in Crisis)



People. The most powerful solution to entangled global crises.



The Corona, Climate, and Economic Crises: Is this Fundamentally a Relationship Crisis?

Our relationships are not trivial; we are not trivial.



Karen O'Brien [Follow](#)
Mar 24 · 6 min read

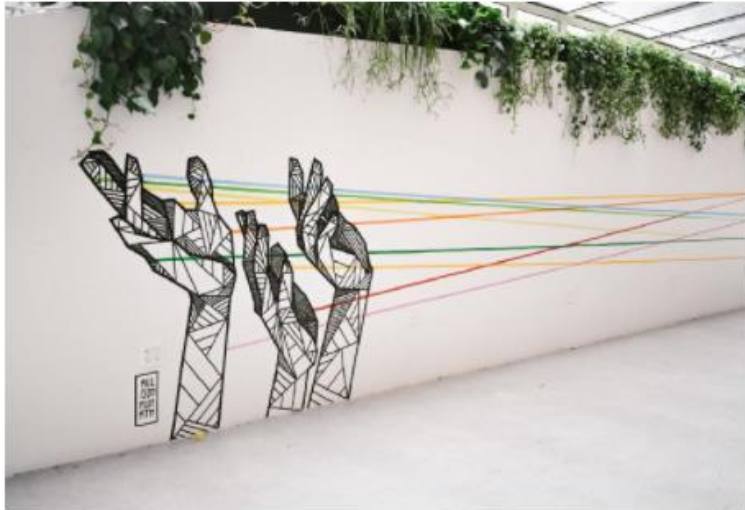


Photo: Connected by Allie Smith on Unsplash

YOU MATTER MORE THAN YOU THINK

Quantum Social Change in Response to a World in Crisis

KAREN O'BRIEN

DRAFT FOR DISCUSSION
JUNE 2020

ART BY TONE BJORDAM

You Matter More Than You Think is about how and why you as an individual matter when it comes to responding to climate change and other global crises.

[GET THE DRAFT NOW](#)

https://medium.com/@Karen_O'Brien/the-corona-climate-and-economic-crises-is-this-fundamentally-a-relationship-crisis-78ca99c78adf

<https://www.youmattermorethanyouthink.com/>



Photo: Tone Bjordam